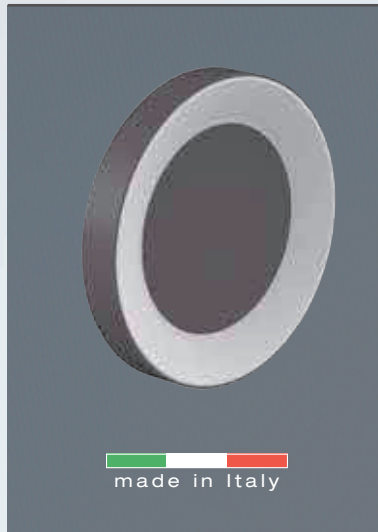




Ross



(IT) Ross è stata studiata per conferire atmosfera e fascino ad ogni contesto. Pensata in due diverse forme, tonda ed ovale è disponibile in cinque varianti colore. Caratterizzata da un'illuminazione discreta ma efficace è ideale sia per ambienti di passaggio come corridoi e scale, sia in ambito civile che industriale. Adatta sia per applicazioni da interno che da esterno grazie all'elevato grado di protezione ip66.

Ross rappresenta una soluzione estremamente versatile grazie alle molteplici funzioni accessorie, è possibile infatti scegliere tra versioni con sensore crepuscolare, con sensore di movimento o con funzione emergenza.

La cover personalizzabile a seconda delle differenti esigenze, amplia inoltre le sue opportunità applicative.

(EN) *Ross has been designed to convey atmosphere and charm to any context. Produced in two different shapes, round and oval, it is available in five different colours. Featuring discrete, yet effective lighting, it is ideal for passageways such as corridors or stairs both in civil and industrial buildings. It is suitable for indoor and outdoor applications thanks to the high level IP66 degree of protection.*

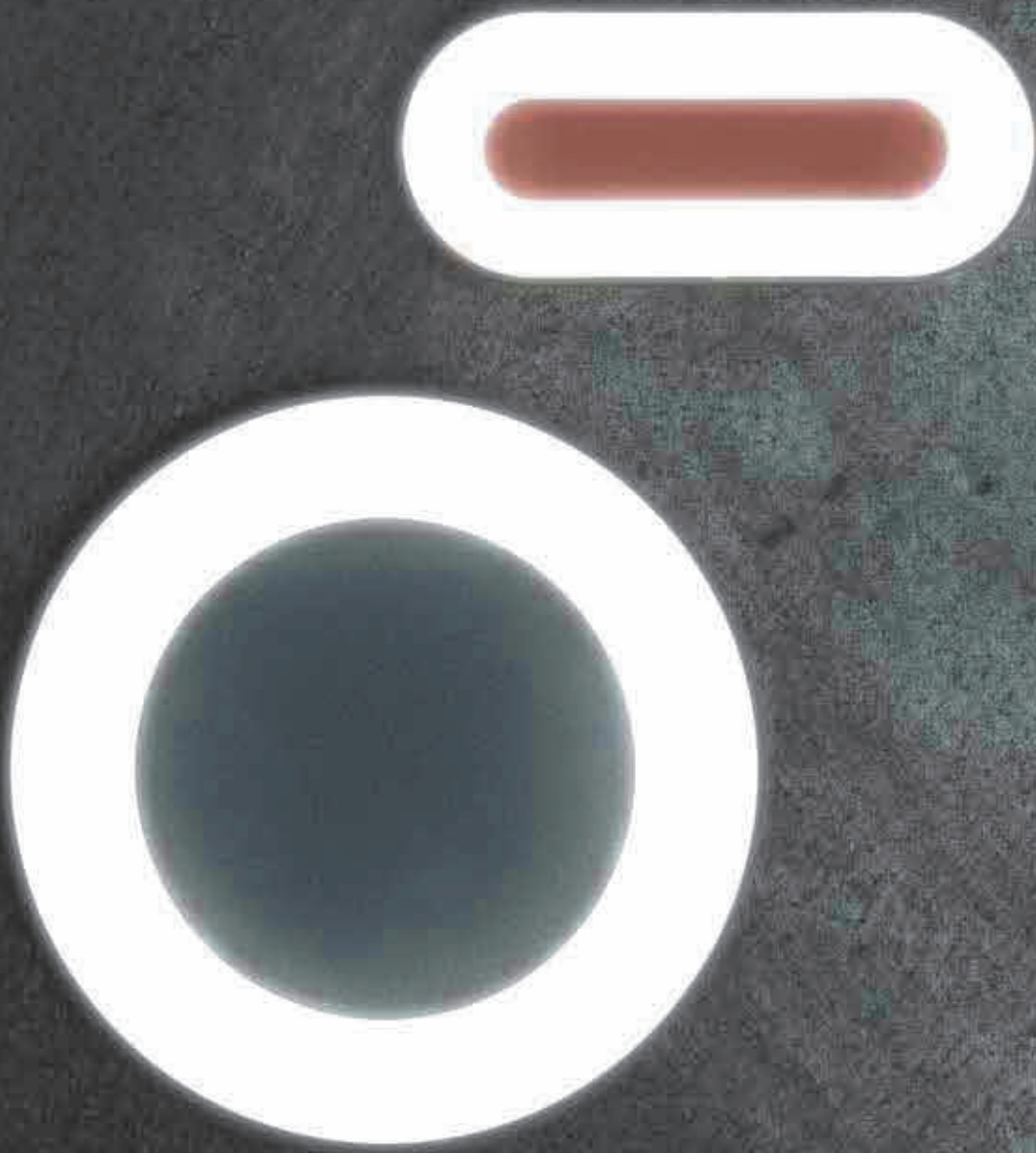
Ross represents an extremely versatile solution, thanks to its many additional functions. In fact, it is possible to choose from versions with a dusk sensor, a motion sensor or an emergency function.

The cover, which can be customised according to requirements, further extends the wide range of applications.

(FR) *Ross a été conçue dans le but d'apporter à tous les contextes du charme et de l'atmosphère. Elle a été réalisée en deux formes, ronde et ovale et dans cinq variantes de couleur. Elle se caractérise par un éclairage discret mais efficace qui convient aussi bien pour les lieux de passage comme couloirs et escaliers que dans un contexte privé ou industriel. On peut l'utiliser à l'intérieur comme à l'extérieur grâce à un degré de protection IP66 très élevé.*

Ross est une solution très polyvalente grâce à ses nombreuses fonctions accessoires, on peut en effet choisir la version avec capteur de luminosité, avec détecteur de mouvement ou avec éclairage d'urgence.

La couverture peut être personnalisée selon les exigences, ce qui augmente les possibilités d'application.



design: Giancarlo Alci



Ross 280



Ross 330



Colori disponibili

Available colours - Couleurs disponibles

- Bianco da stampaggio
White - Blanc moulé
- Nero da stampaggio
Black - Noir moulé
- Grigio High Tech
Grey High Tech - Gris High Tech
- Grigio antracite
Grey anthracite - Gris anthracite
- Corten

Materiale diffusore

Diffuser material - Type de diffuseur

- Policarbonato poliGLASS

IT Adatto anche ad uso esterno.
Driver 220 - 240V integrato e moduli Led di ultima generazione.
Base in policarbonato, ottenuta da stampaggio ad iniezione proprio.
Diffusore in Policarbonato tripla stabilizzazione ai raggi UV, ad alto spessore con finitura PoliGLASS, ottenuto da stampaggio ad iniezione proprio.
Guarnizioni in silicone per il mantenimento del grado IP66.
Sistema di chiusura tramite grani, con cava esagonale ch.2.
Kit di fissaggio per il mantenimento del grado IP incluso.
LED 4000K (N), 3000K (3) o 2700K (2). Alimentazione diretta 220-240V.
Nessun rischio fotobiologico, RG0 gruppo di rischio esente (EN62471).

EN Also suitable for outdoor use. Integrated 220 - 240V ballast and latest generation Led modules. Polycarbonate base, injection moulded in-house. Very thick polycarbonate diffuser with triple UV stabilisation and PolyGLASS finish, injection moulded in-house.
Silicone gaskets to maintain IP66 rating.
Closing system by means of hex socket set screws size 2 mm.
Securing kit included to maintain IP rating.
LED 4000K (N), 3000K (3) or 2700K (2). LED. Integral ballast 220-240V.
No risk of photobiological damage, RG0 group (EN62471).

FR Egalement adapté à l'usage à l'extérieur.
Driver 220 - 240V intégré et modules Led de dernière génération.
Base en polycarbonate, s'obtient du moulage à injection propre.
Diffuseur en Polycarbonate triple stabilisation aux rayons UV, très épais avec finition PoliGLASS, s'obtient du moulage à injection propre.
Joints en silicone pour maintenir le degré IP66.
Fermeture vis à six pans creux ch.2
Kit de fixation pour le maintien du degré IP inclus.
LED 4000K (N), 3000K (3) ou 2700K (2) (blanche chaud). Alimentation intégrée 220-240. Pas de risque photobiologique, RG0 groupe (EN62471).

Completamento codici

Code completion - Complètement des codes

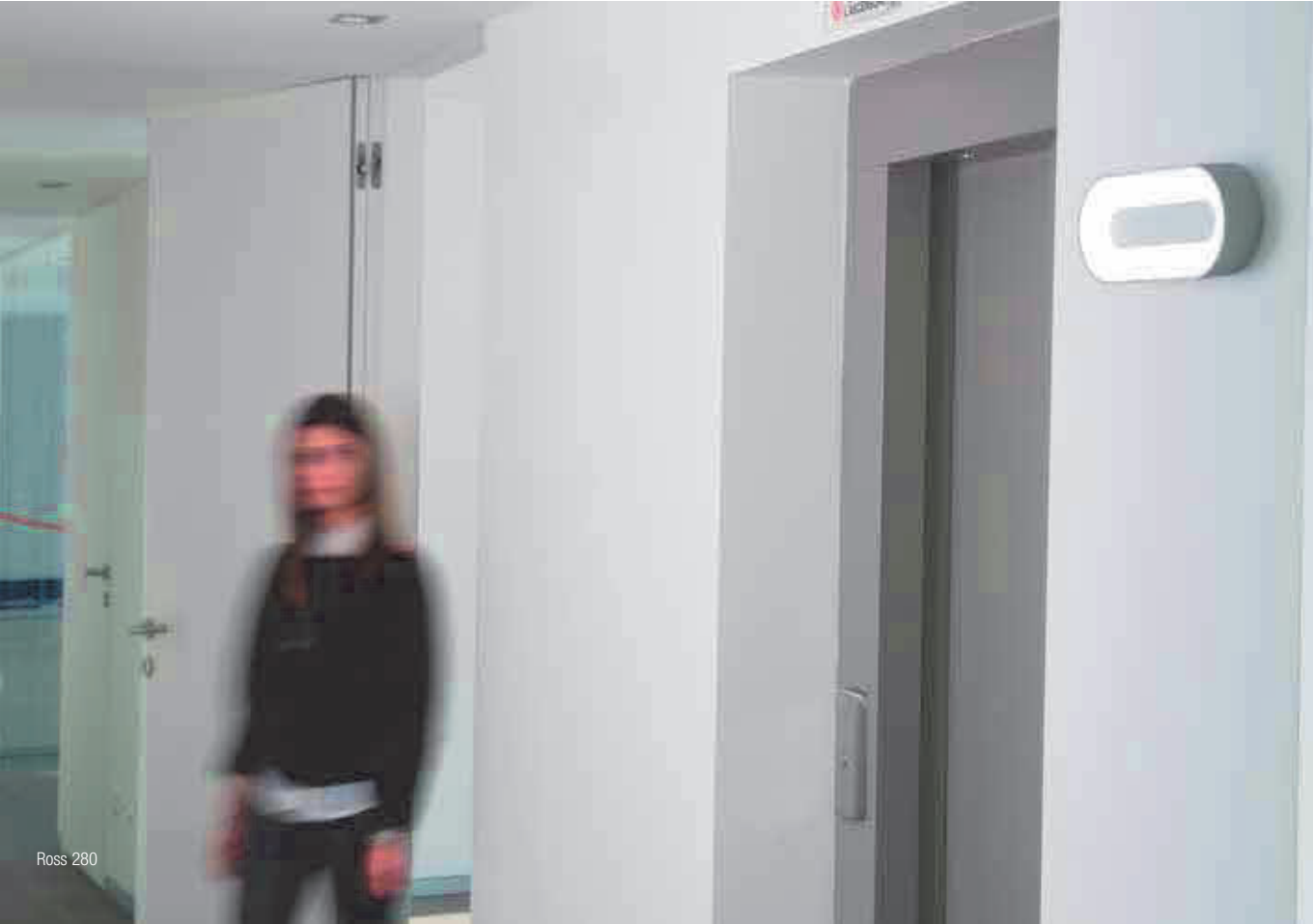
- colore led** - completare il codice sostituendo al quadrato rosso la lettera o il numero corrispondente alla temperatura colore scelta.

colour of the led - complete the code by replacing the red box with the letter or number corresponding to the selected colour temperature.

couleur led - compléter le code en remplaçant le carré rouge par la lettre ou le numéro correspondant à la sélection de température couleur.

- N** = (4000K)
3 = (3000K, lumen -5%)
2 = (2700K, lm -5%)

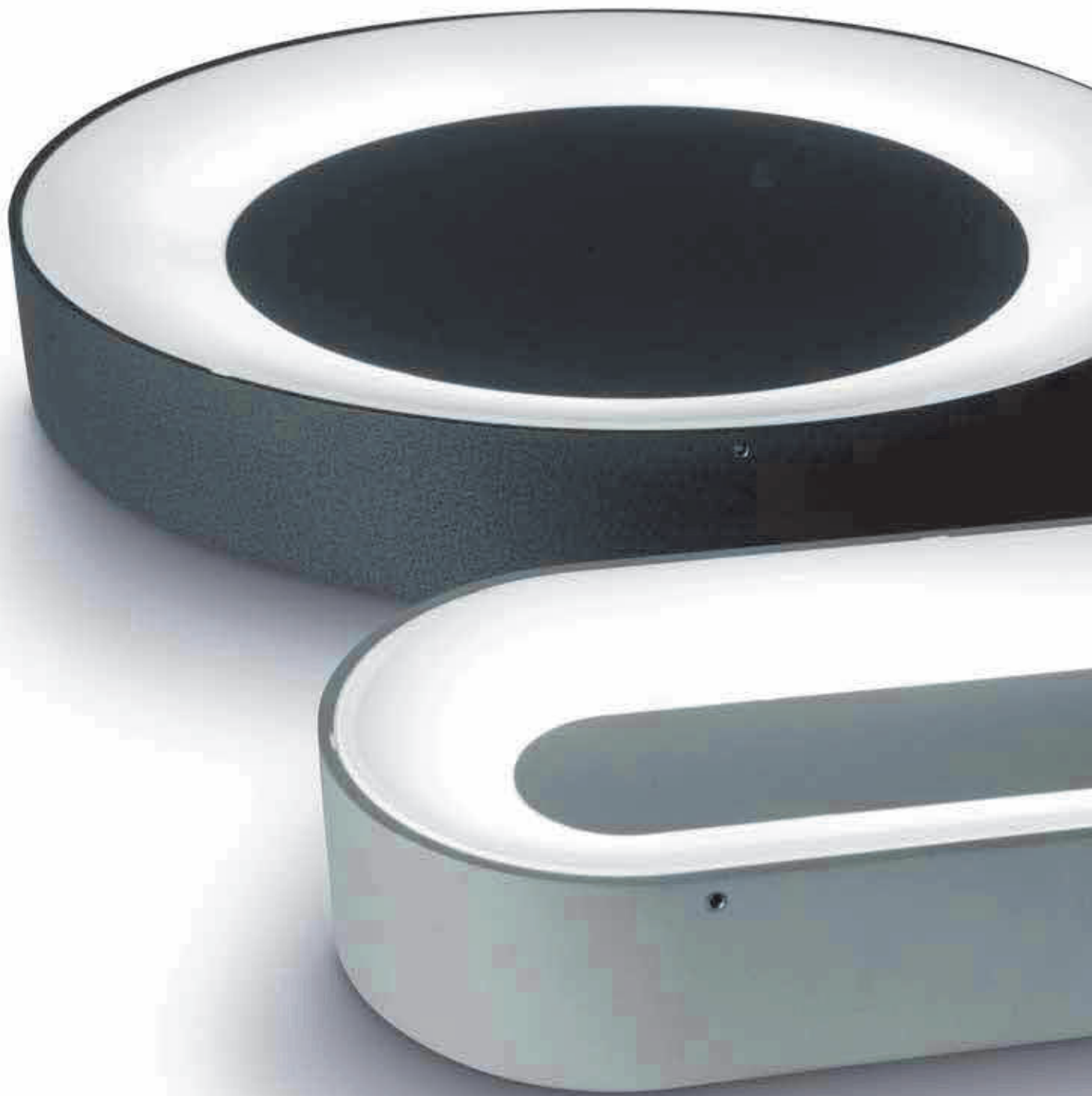
Ross



Ross 280



Ross 330



Colori disponibili
Available colours - Couleurs disponibles



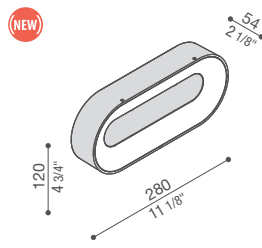
Ross

design: Giancarlo Alci

Ross 280		LED	Specif.	Col.	poliGLASS
IP 66 IK 10 20J xx9 CE		LED 1500 lm 10W real output lm 1050	CL.II E	○	LL124000□
				●	LL124001□
				■	LL124002□
				▲	LL124003□ LL124004□
	LED 1500 lm 10W real output lm 1050	CL.II E	○	LL124005□	
			●	LL124006□	
			■	LL124007□	
			▲	LL124008□ LL124009□	
	LED 1500 lm 10W real output lm 1050	CL.II E	○	LL124025□	
			●	LL124026□	
			■	LL124027□	
			▲	LL124028□ LL124029□	
	LED 1500 lm 10W real output lm 1050	CL.II E	○	LL124030□	
			●	LL124031□	
			■	LL124032□	
			▲	LL124033□ LL124034□	

A A+ A++

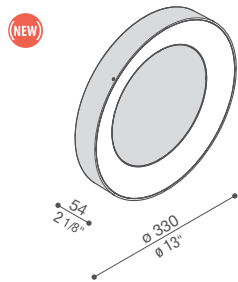
led colour
N = (4000K)
3 = (3000K, lm -5%)
2 = (2700K, lm -5%)



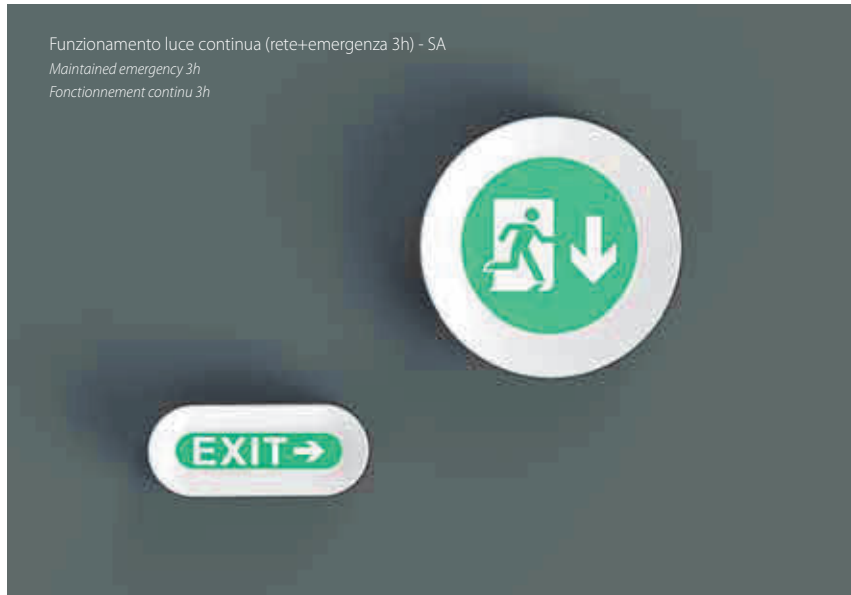
Ross 330		LED	Specif.	Col.	poliGLASS
IP 66 IK 10 20J xx9 CE		LED 2500 lm 20W real output lm 1750	CL.II E	○	LL124010□
				●	LL124011□
				■	LL124012□
				▲	LL124013□ LL124014□
	LED 2500 lm 20W real output lm 1750	CL.II E	○	LL124015□	
			●	LL124016□	
			■	LL124017□	
			▲	LL124018□ LL124019□	
	LED 2500 lm 20W real output lm 1750	CL.II E	○	LL124020□	
			●	LL124021□	
			■	LL124022□	
			▲	LL124023□ LL124024□	
	LED 2500 lm 20W real output lm 1750	CL.II E	○	LL124035□	
			●	LL124036□	
			■	LL124037□	
			▲	LL124038□ LL124039□	

A A+ A++

led colour
N = (4000K)
3 = (3000K, lm -5%)
2 = (2700K, lm -5%)



Cover personalizzabile
 Customisable cover
 Cover personnalisable



Funzionamento luce continua (rete+emergenza 3h) - SA
 Maintained emergency 3h
 Fonctionnement continu 3h



Ross 330



Ross 280